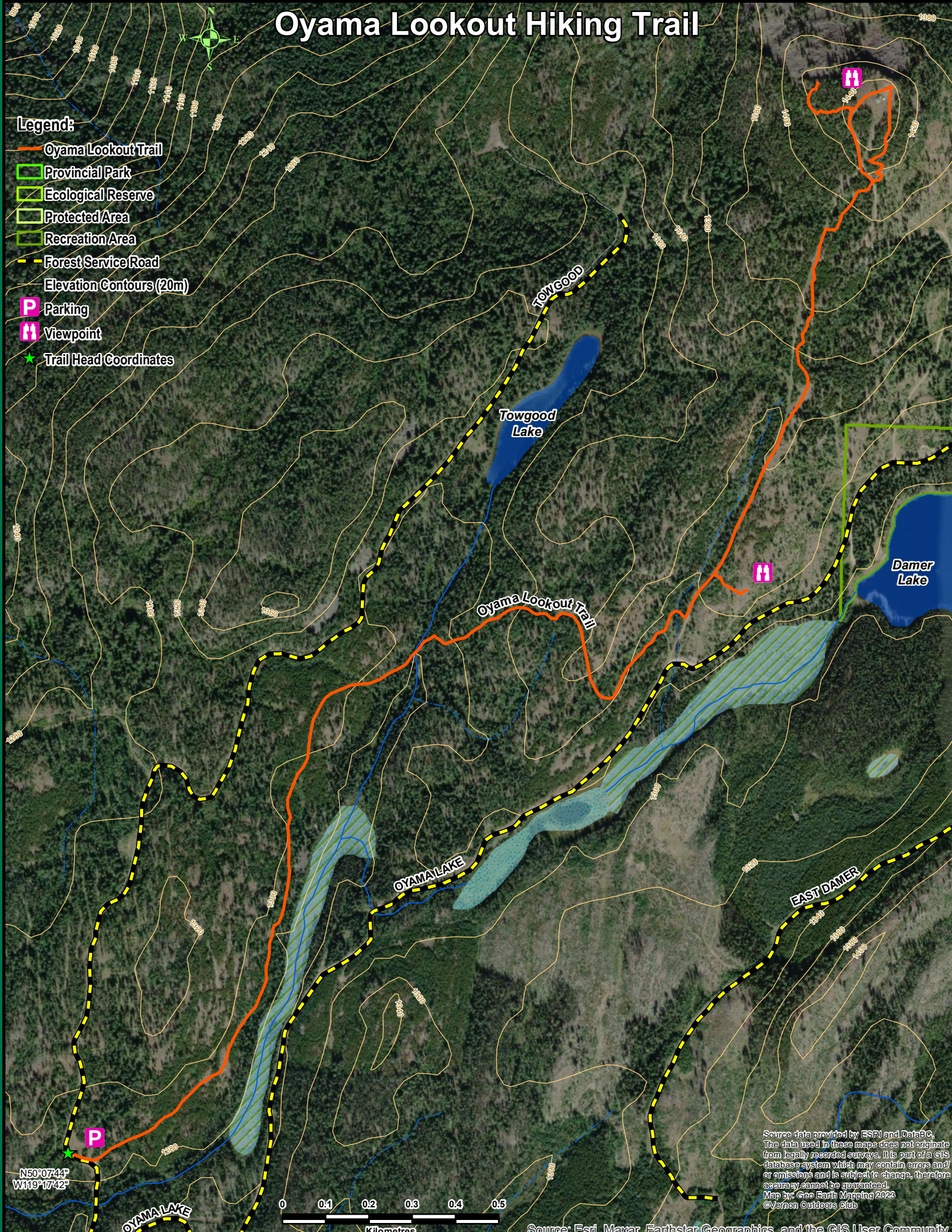


Oyama Lookout Hiking Trail

Legend:

- Oyama Lookout Trail
- Provincial Park
- Ecological Reserve
- Protected Area
- Recreation Area
- Forest Service Road
- Elevation Contours (20m)
- Parking
- Viewpoint
- Trail Head Coordinates



N50°07'44"
W119°17'42"



Source data provided by ESRI and DataBC. The data used in these maps does not originate from legally recorded surveys. It is part of a GIS database system which may contain errors and/or omissions and is subject to change, therefore accuracy cannot be guaranteed. Map by: Geo Earth Mapping 2023 ©Yarmen Outdoors Club

Source: Esri, Maxar, Earthstar Geographics, and the GIS User Community